



## MedicalDirector Bluechip Day Surgery July 2019 Update for Victoria

We are pleased to announce the release of the July 2019 update for MedicalDirector Bluechip Day Surgery update for Victoria.

We strongly recommend that you apply the following update as this update is valid from July 2019.

If you have any issues, contact MedicalDirector Customer Support on **1300 300 161**.

### Included in this Update

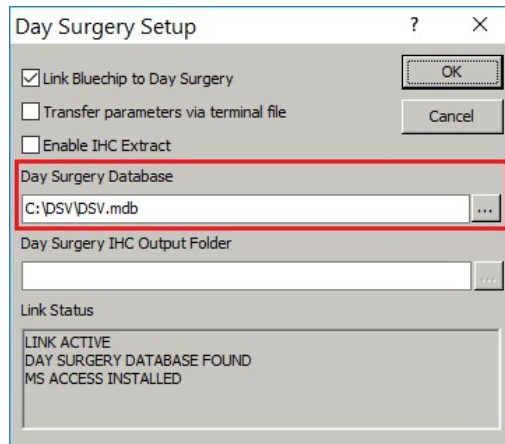
---

- Updated Diseases and Procedure tables in DSV Data to ICD10-AM-11
- Updated headers in HCP and PHDB extracts to reflect changes to code tables
- Updated HCP extracts to reflect Mental Health status “9” and DRG version 10 as “AO”
- Change PHDB extract to include patient details
- Add new Accommodation Type ‘H’ to options for Accommodation Type on Separation (Discharge tab)
- Updated National Private Patients Hospital Claim Form for 2019
- Updated Same Day Certificate for 2019 legislation
- Removed redundant ‘Other’ page from Episodes form and moved Additional Admission Items button to Admissions page
- Updated support for Grouper 3M CSG 2019.1

### Installation Process

#### How to Backup Day Surgery Files

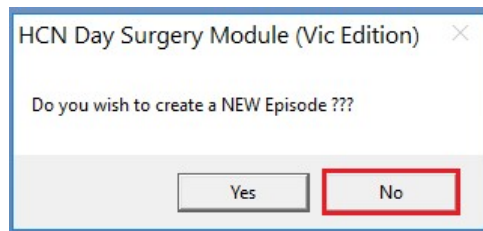
1. Download and extract the current VIC Day Surgery file 2019-20 (DS\_15.03\_VIC.zip) file to your local desktop
2. Open the DS folder. *Referred to as DSV* (folder location can be found in Bluechip)  
Setup > Practice > Links > Day Surgery



3. Create a backup folder within the DSV folder
4. Copy the DSV, DSV Data and DSV Episodes into the backup folder and rename with \_old e.g. DSV\_old
5. Copy and replace the existing database (DSV.mdb and DSV Data.mde) from the VIC Day Surgery file 2019-20 (DS\_15.03\_VIC.zip) folder

### Relinking Day Surgery module

1. Open Day Surgery (if prompted to create Episode select No)



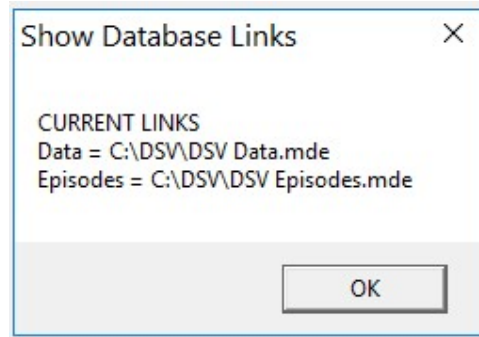
2. When prompted to Find Episode select Cancel



3. Relink Episodes  
Go to Add-ins > Advanced > Relink Databases > Episodes
4. Relink DS Data  
Go to Add-ins > Advanced > Relink Databases > DS Data

5. Show links

Go to Add-ins > Advanced > Relink Databases > Show Links



6. Go to Add-ins > Advanced > Settings and update the DRG version to 9.0 or 10.0 if required

DISCHARGECODE	1	HCP
DRGVER	9.0	Default DRG Version
EXPORTDIR	C:\DSV\Exports	Initial data export directory
FUNDINGARRANGEMENT		DHSV default: Funding arrange

7. Close Day Surgery